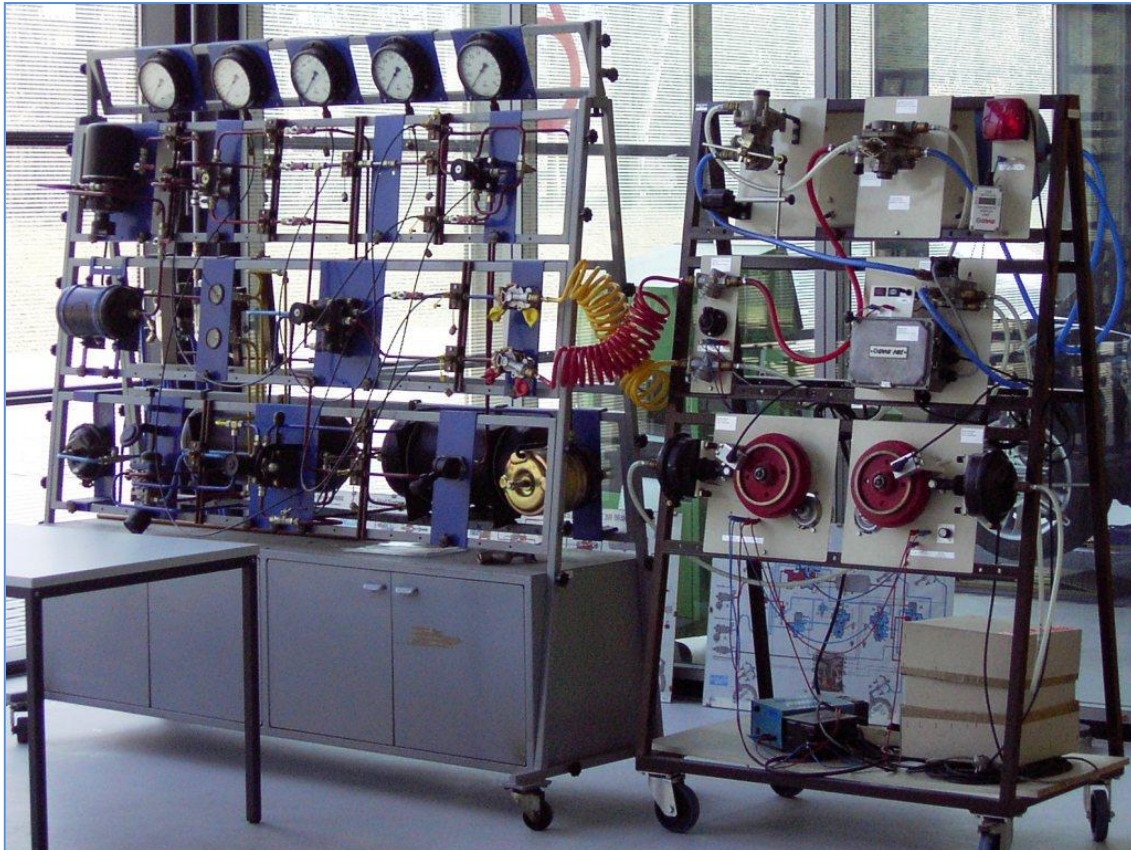


Pr Aufbau Druckluftbremsanlage + ABS Nachrüstsatz

Ab Jahr 1992



Versuchs-Druckluftbremsanlage + ABS Nachrüstsatz

Ab Jahr 1997

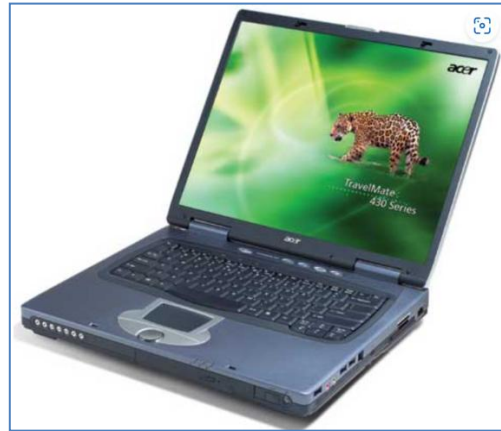
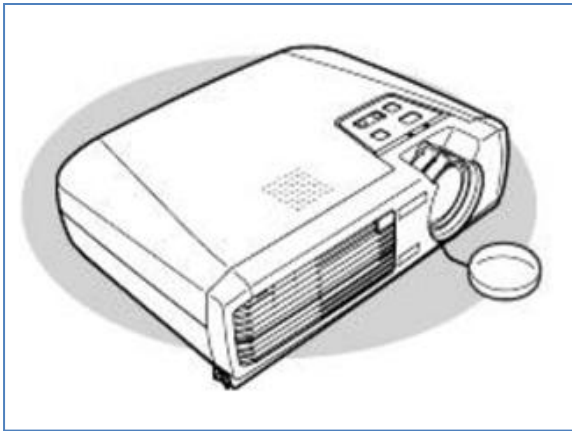


Videoprojektor Polaroid
Polaview 95 (etwa)



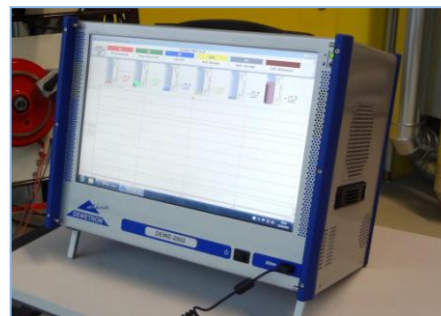
Notebook NB Yakumo
Media P-100 / 8MB / 1,3 HDD

Ab Jahr 2004

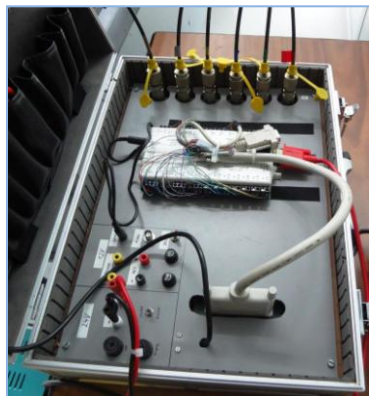


Videoprojektor EPSON EMP 74 Notebook Acer Travelmate 432 LC

Ab Jahr 2010/12



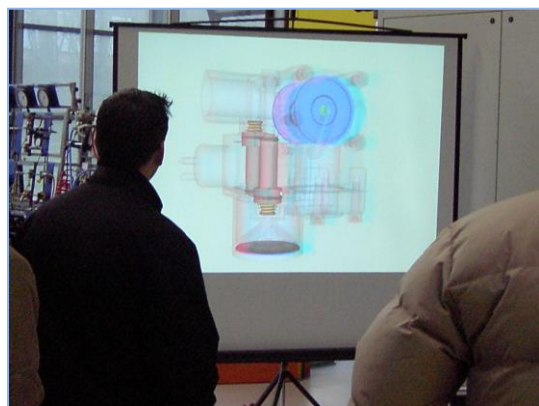
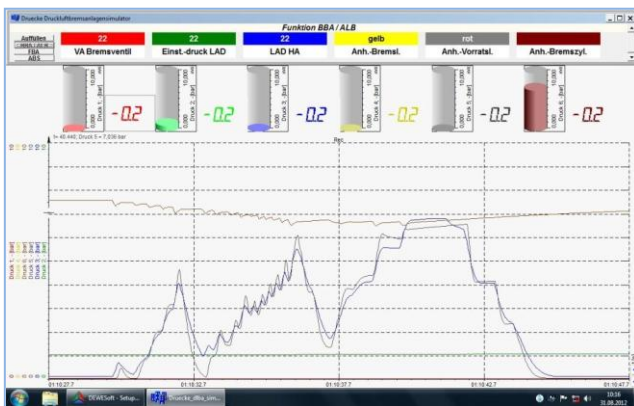
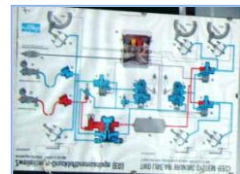
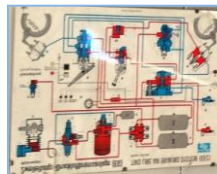
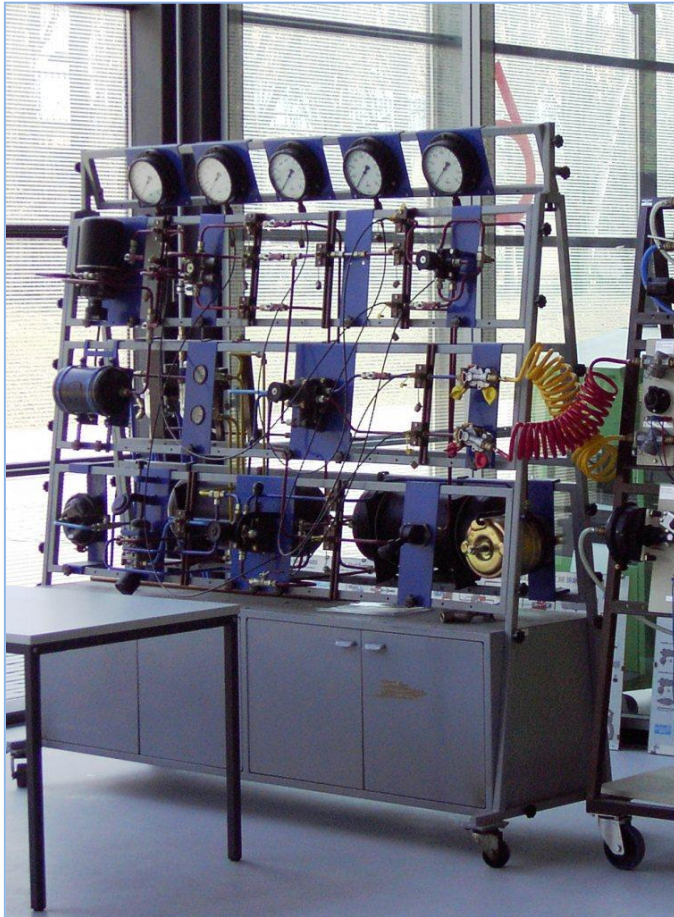
LCD Projektor 4000 EPSON DEWE 2602 und DEWESoft 7.0.4
EB-1910



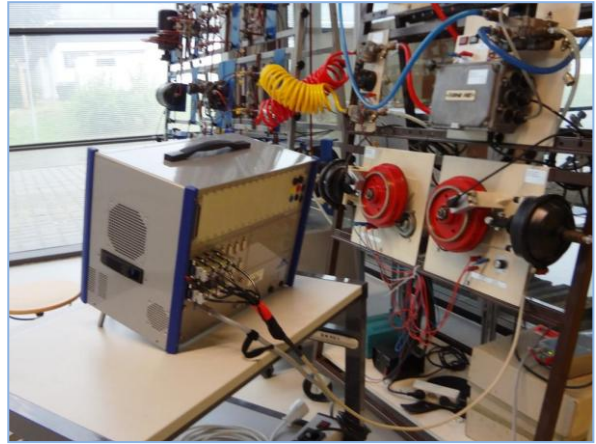
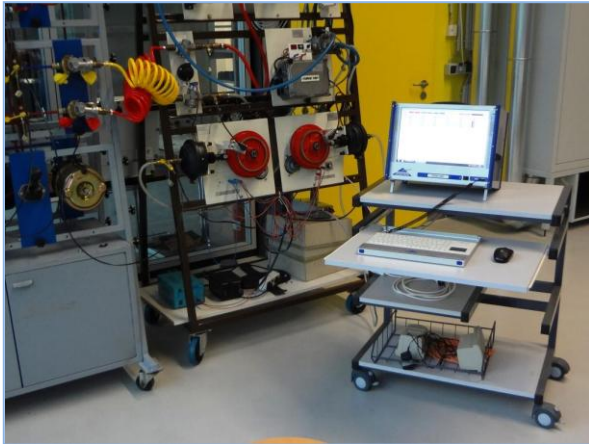
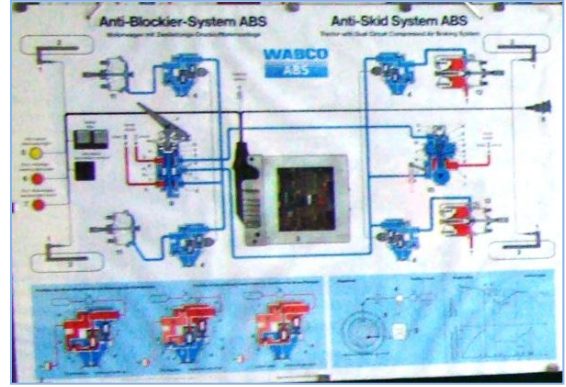
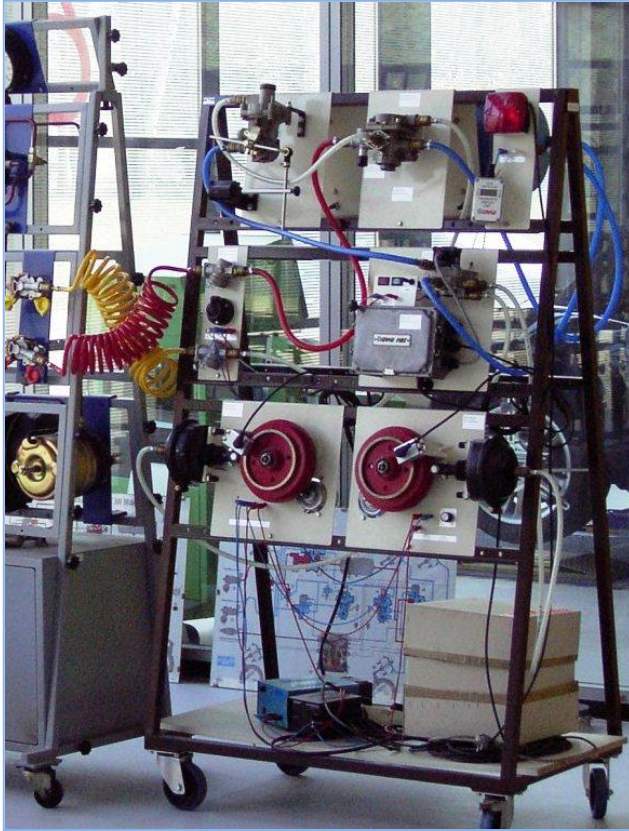
Notebook 1997

Notebook 2008

DEWESoft 2012



Versuchs-Druckluftbremsanlage



ABS Nachrüstsatz

-
-
-

Prof. Dr.-Ing. habil. Stefan Müller

- AutoCad, alaska 2.3, RecurDyn™, CATIA V5/ MSC SimDesigner
- Turbo Pascal 5, Lotus 1-2-3, MS Excel, C++, Siclab/Xcos
- Agilent VEE Pro, Vector CANalyser pro, DEWESoft 7.0.4
- Elektroniker
- Kfz-Werkzeuge

Henri Heinlein

- Kfz-Werkzeuge
- Prüfstand fahren Z8, B200 und MAN
- Prüfer BOGE-Shocktester, Bosch-Achsmessgerät FWA 515 und MAN

(Dipl.-Ing. (FH) Gerd Grünberg - Druckluftbremsanlage)

(Christel Müller)

(2016, 2023)