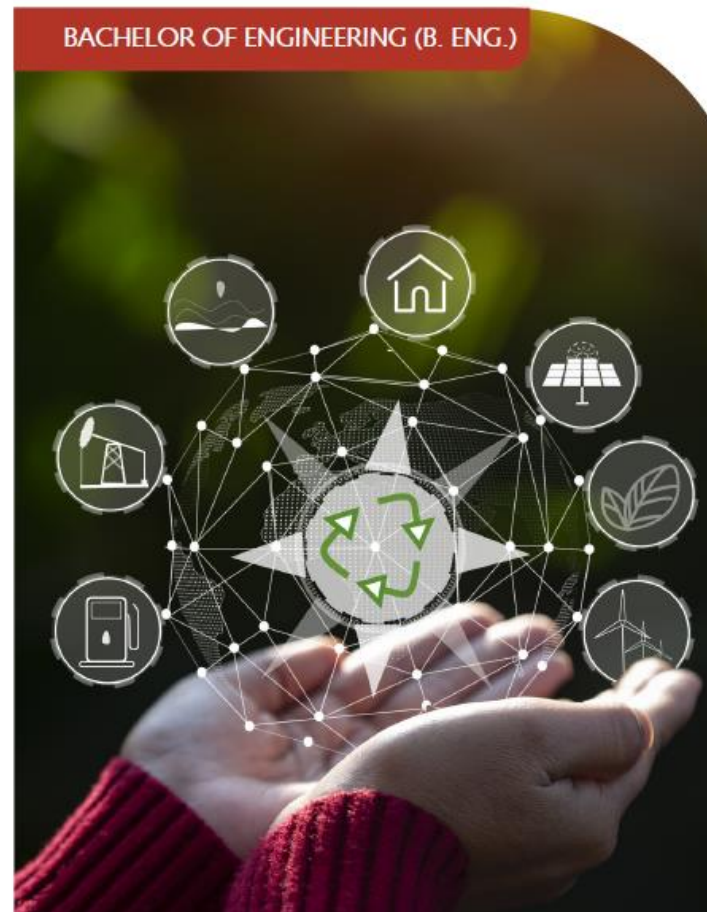


GREEN ENGINEERING AND SUSTAINABLE MANAGEMENT

BACHELOR OF ENGINEERING (B. ENG.)



First impressions

Music, Culture, Sports ...

Schubert in Zwickau ...

Franz und Robert ...



"Dieses Foto" von Unbekannter Autor
ist lizenziert gemäß CC BY-SA



Racing Team WHZ

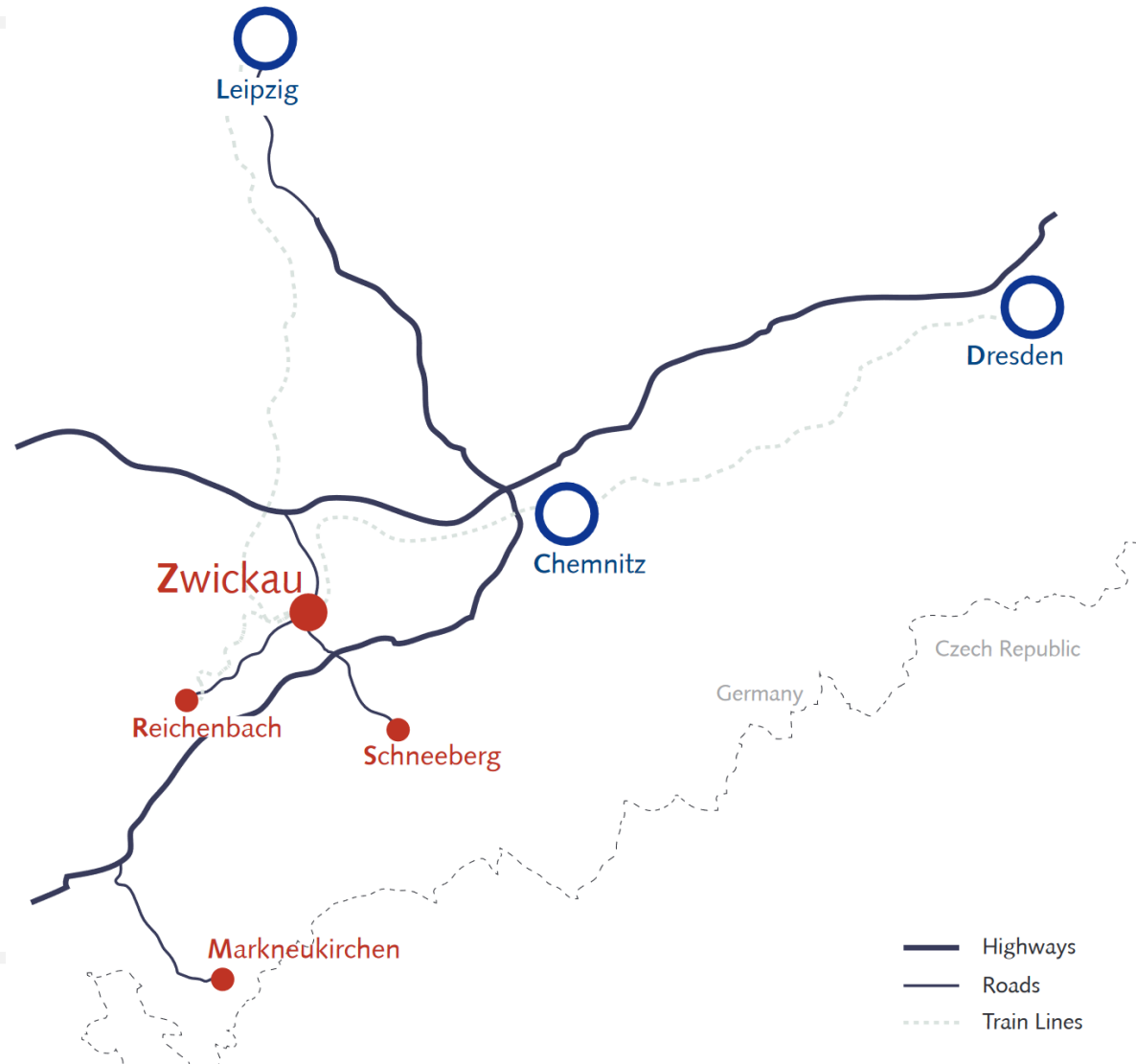


First impressions

Campus Scheffelfberg



Where to find us...



Zwickau in the heart of Saxony

WELCOME your Programme leader team

Academic Advisors



Dr. Krystin Zigan
PhD in Strategic Management and many years of teaching experience at the University of Kent (Business School)



Dr. Stefan Zigan
Renewable Engineering
PhD in Material sciences and process optimisation
Working at the the University of Greenwich for more then 8 years
Expert in process modelling and -optimisation



Dipl.-Ing. (FH) Anja Gerbeth
Lecturer in Ecology and Analytical methods
Many years of research experience in the field of chemical engineering

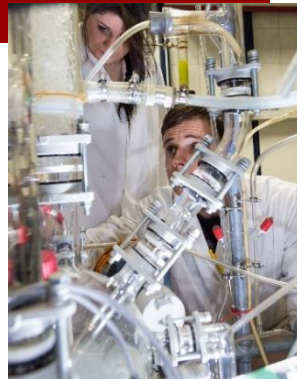
FUN AND FACTS

- founded 1897 (Birth year of Irène Joliot-Curie daughter of Marie Curie and Amelia Earhart first women crossing the Atlantic by airplane)
- 160 professors and 500 employees and researchers
- Approx. € 9 million third-party funding income (Salary of some football stars per year)



Reasons to study here:

1. Germany world leader in technology and high education standards in Engineering and business
2. Modern teaching methods
3. Small study groups
4. Modern equipment and laboratories
5. No tuition fees
6. Strong connection to practice
7. Language training



Application process

Factors to consider:

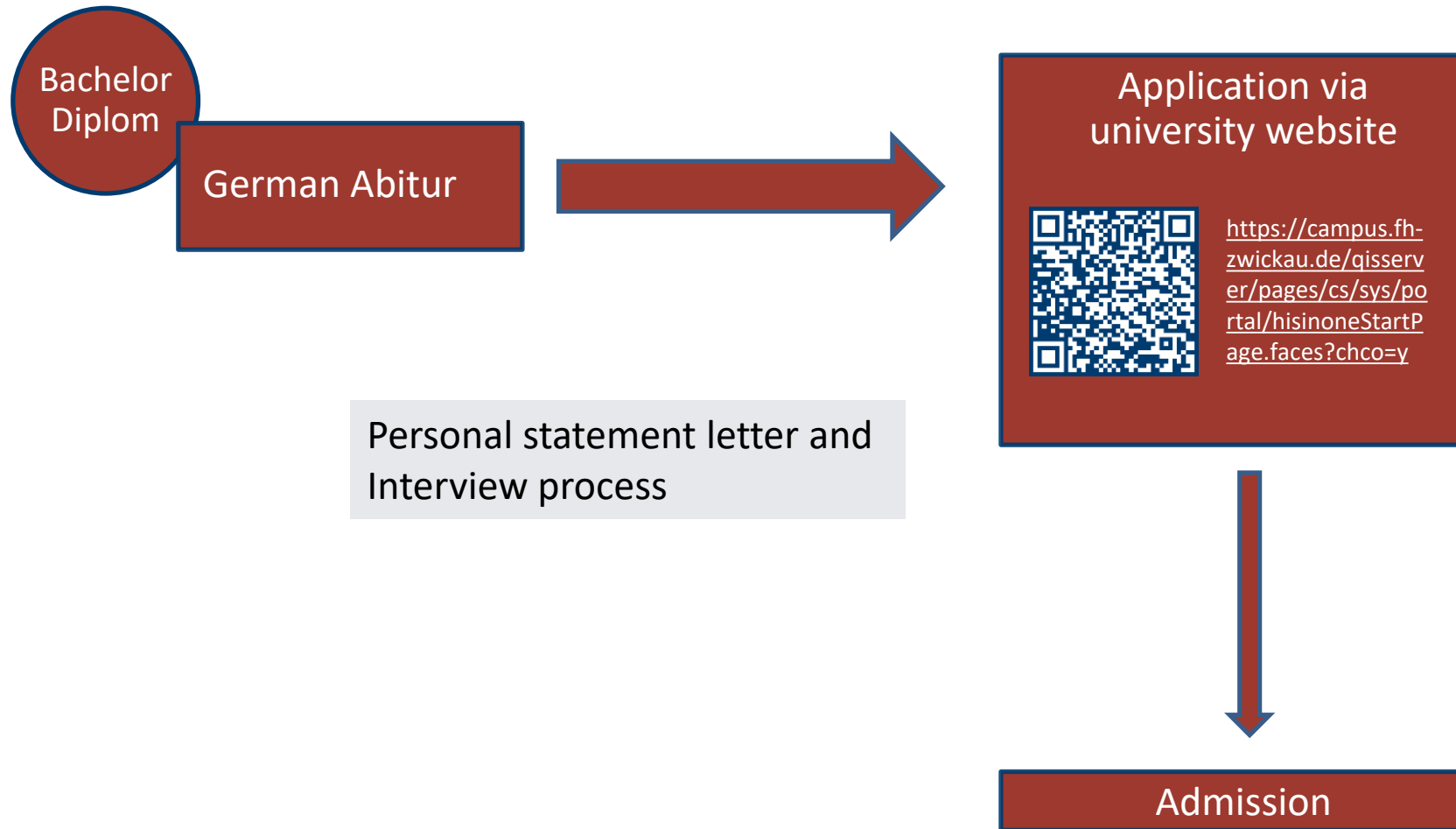
1. Choose a degree programme
2. Check the entry qualifications
3. Check required language skills
4. Check special requirements due to educational background

International Office

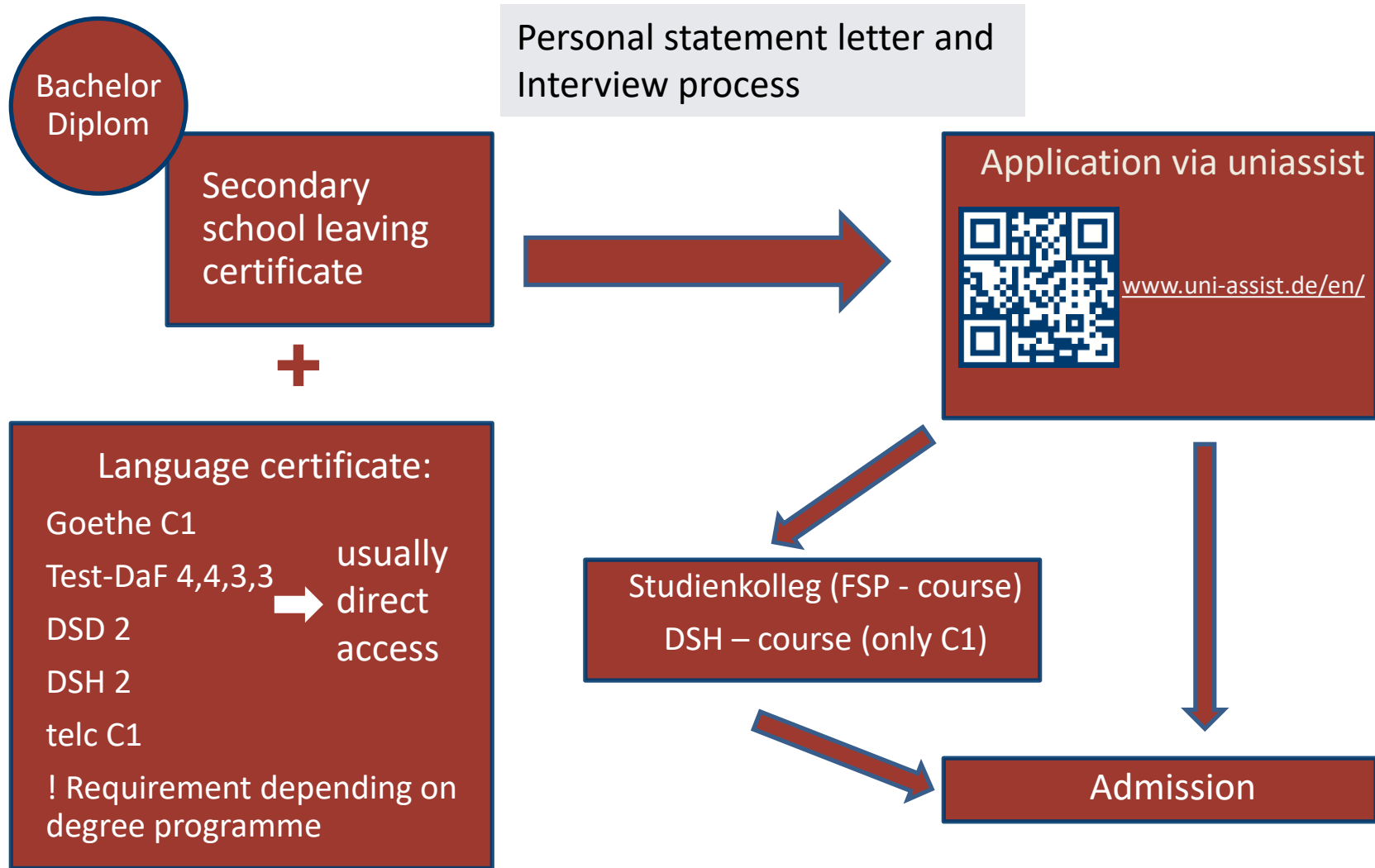
- Advice and support for prospective and current international students
- Organisation of events with an international and/or intercultural context



Application process with German university entrance qualification



Application process with foreign university entrance qualification



Application periods

EU nationals

	Open admission
Winter semester	April – 31 July
Summer semester	September - 31 December of the previous year

Non EU nationals

	Open admission
Winter semester	April - 30 June
Summer semester	September - 30 November of the previous year

German A-Levels

	Open admission
Winter semester	31 August
Summer semester	28 February

Application documents

- Admission application form
- Passport photo
- Copy of passport
- Complete, signed curriculum vitae
- Copies of:
 - School-leaving certificate in the original language
 - If applying for a Master's programme, university certificates and academic achievements
 - ! If documents are not available in German or English, certified translations in German or English are required!
- Proof of sufficient German language skills
- Further pre-educational and degree programme-specific documents

Detailed information on the application process



<https://www.fh-zwickau.de/english/study/incomings/application/international-full-time-study/your-application/>

The hard work to come to the University is done ...

Auditorium 1



If you are looking for great job opportunities in the renewable Energy sector study green Engineering and Sustainable Management, so you can change the world ...

Hi folks,
my name is T. J. Walker
I am here to tell you
about the new Bachelor Degree
in Green Engineering and
Sustainable Management ...



► **STUDY SCHEDULE / STRUCTURE OF DEGREE***
BASIC STUDIES

1 Semester	2 Semester	3 Semester
Mathematics I Physics for Engineers I Chemistry for Engineers Introduction to green engineering Business Administration German for study purposes	Engineering of Electrical Systems Mathematics II Chemistry for Engineers Physics for Engineers II Physical Chemistry Strategic Management	Physical Chemistry Chemical Processes and Technologies Ecology Instrumental analysis Project Management Essentials with Case Scenarios Marketing Principles

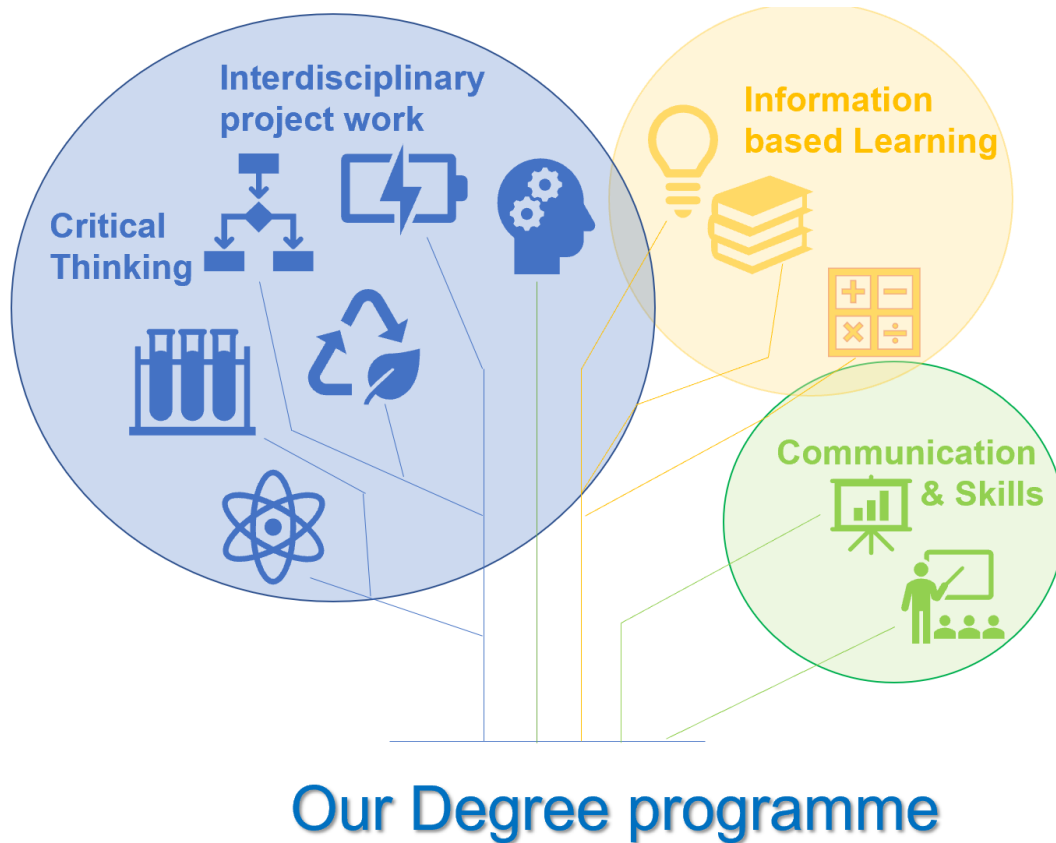
SPECIALIST STUDIES

4 Semester	5 Semester	6 Semester	7 Semester
Circular Economy and Resource Management Regenerative energy generation Fundamentals of Material Science Measurement acquisition and data processing Global Business Environment Supply Chain Management	Energy - Sustainable strategies Water and air pollution and protection Data acquisition and analysis in industrial processes Operations Management Elective modules*	Renewable Energy and Distributed Generation Process Plant Design & Material Handling Radioactivity and radiation protection Information Technologies Elective modules*	Work placement Bachelor thesis *Elective modules (selection): <i>Methods of Scientific Work / Presentation Skills; Engineering Professional Skills; Global Project and Science Communication in English; World Trade 1: Globalization; Electrochemistry; Microstructure and surface analysis; Managing Intercultural Collaboration; Working and Studying Worldwide</i>

* Please note that the study schedule shown above is a simplified representation. You can find the detailed schedule, the module list as well as study and examination regulations in the Modulux database of the University of Applied Sciences Zwickau.
to Modulux-Database -->



LEARNING APPROACHES



Student accomodation in the city centre ...

Student accomodation

Cost € 200 and € 270
per month.



Future Careers ...

Job opportunities



Design
Engineers



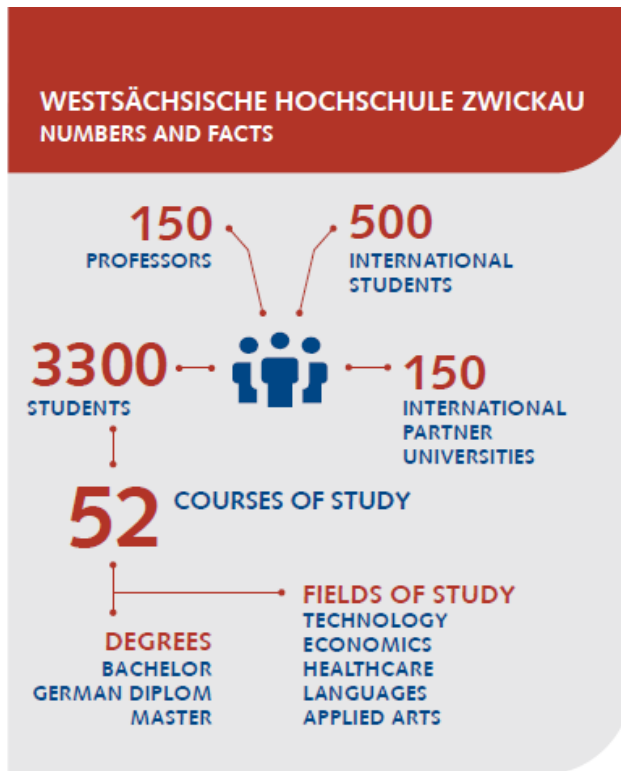
Process
engineers



Safety
Engineers

Earning potentials Average
Salary of Chemical
Engineers 40.000 – 60.000
€ per annum

Be Part of it ...



Thank you very much for listening...