

► APPLICATION

You can apply online at: www.fh-zwickau.de > Studium > Studieninteressenten > Bewerbung

Zugangsvoraussetzungen

- First professionally qualifying degree with automotive technical reference (Dipl.-Ing., B. Eng. Honors or comparable) with at least 210 ECTS points. Applicants with 180 ECTS points can be offered a preparatory pre-semester.
- Language requirements: English level B2, German level C1 (for non-native speakers)
- Applicants should also have at least one year of relevant practical work after completing their first professional degree
- The examination board decides on the admission based on the submitted documents or on the basis of an admission test.

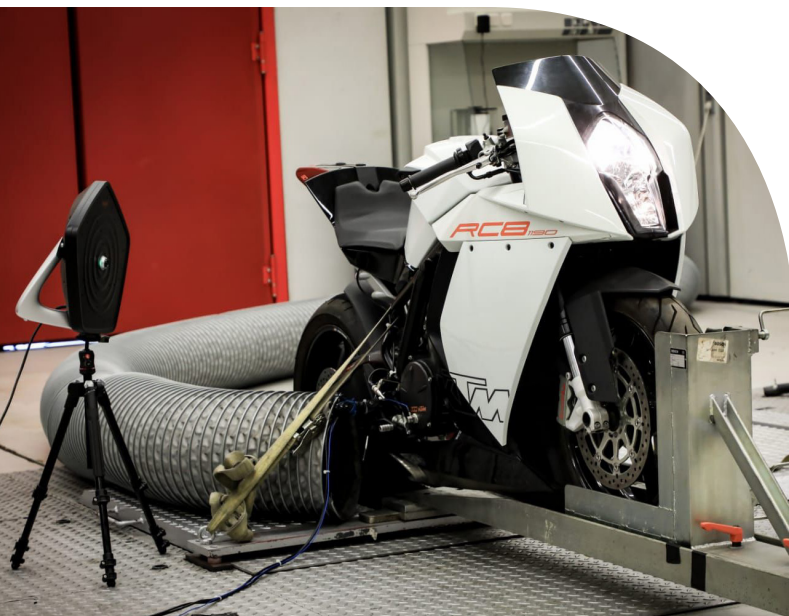
Application deadlines for national students

- 31 august for the following winter semester
- 28 february for the following summer semester

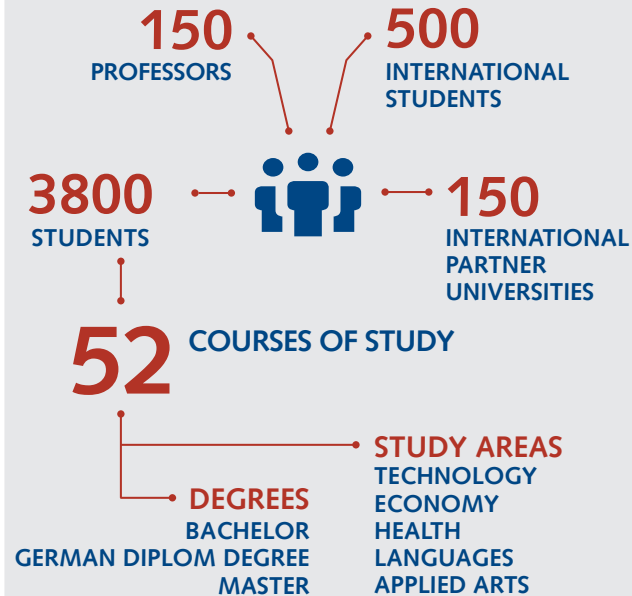
Application deadlines for international students

- 30 June for the following winter semester
- 30 November (of the previous year) for the following summer semester

You can also apply if the application deadline has already expired. Please contact us if you are interested.



WESTSÄCHSISCHE HOCHSCHULE ZWICKAU FACTS



WESTSÄCHSISCHE HOCHSCHULE ZWICKAU

Kornmarkt 1, 08056 Zwickau
www.fh-zwickau.de

Information on studying and applying

Department of Student Affairs / Student Advisory Service
Kornmarkt 1, 08056 Zwickau
Tel.: +49 (0) 375 536-3440
Studienberatung@fh-zwickau.de

Information on the automotive engineering course

Faculty of automotive engineering
Tel.: +49 (0) 375 536-3440
Mail: automotive@fh-zwickau.de
www.fh-zwickau.de/Automotive_Engineering

Die Westsächsische Hochschule Zwickau wird mitfinanziert durch Steuermittel auf der Grundlage des vom Sächsischen Landtag beschlossenen Haushaltes.

Änderungen aller Angaben im Sinne der weiteren Ausgestaltung des Studienangebots sind vorbehalten.

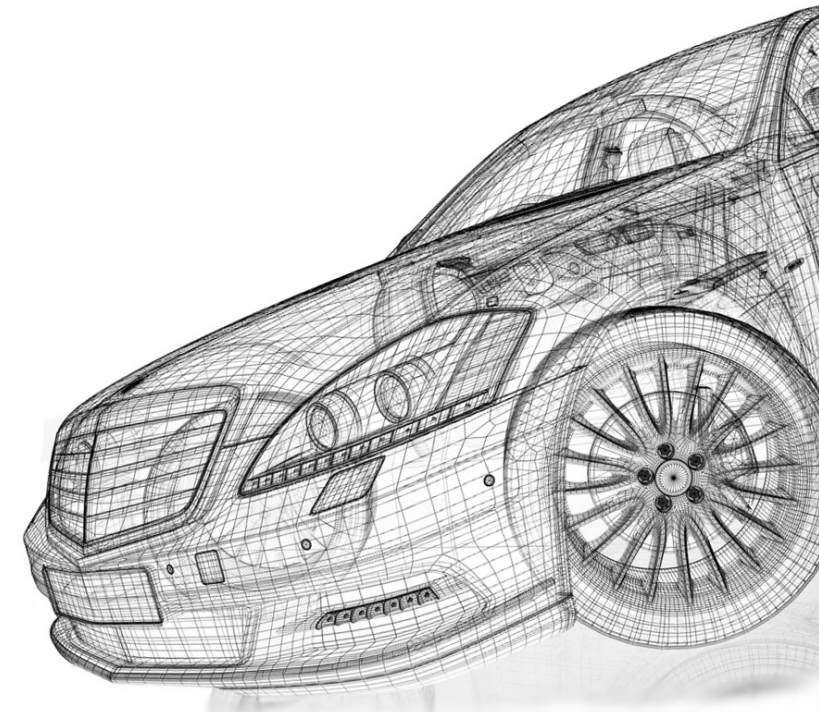
Fotos: Fotolia.de/podsalnykh (S. 1), Westsächsische Hochschule Zwickau/Helge Gerischer (S. 3 & 4), Westsächsische Hochschule Zwickau (S. 5)

WHZ, K&M, 04/2020

Full-time studies, graduate program

AUTOMOTIVE ENGINEERING

MASTER OF SCIENCE (M.Sc.)



AUTOMOTIVE ENGINEERING

► YOUR STUDIES

The master's degree program Automotive Engineering provides you with in-depth scientific and technical knowledge in the fields of automotive engineering, road transportation and management. You will be enabled to apply scientific methods and recent developments in the fields of vehicle engineering and manufacturing as well as in related engineering disciplines in a solution-oriented manner.

Our professors are actively involved in research and teaching, allowing them to base the curriculum around the latest technological trends and knowledge. Small group sizes allow for an efficient cooperation amongst the students within the framework of individual projects. In addition, a close exchange with professors and lecturers is made possible, from which the students benefit to a great extent.

Globalization is an inherent part of almost all industrial process chains. This diversity is also reflected in the seminar groups at the WHZ, which include students from a wide variety of nations. In this vibrant learning environment you will not >>>

- 🎓 **Degree:** Master of Science (M.Sc.)
- ▶ **Start:** Winter and summer semester
- 📅 **Type of study:** full-time studies, graduate program

- 🕒 **Duration/ECTS points:** 3 semesters / 90 ECTS
- 🔒 **Restriction on admission:** free admission
- 💶 **Fees:** 500 Euro/semester



► CAREER PROSPECTS

The successful completion of the program qualifies you for a position as a development or project engineer at automobile manufacturers and their suppliers. Further job opportunities may include a position as a test engineer at testing and monitoring authorities or a career in the higher service in federal institutions. You may also choose to continue on the academic track with a doctoral candidate position (PhD).

>>> only extend your specialist knowledge from lectures and textbooks, but you will also develop your intercultural skills through the exchange of experiences with your fellow students.

You are able to complete your Thesis at the university or anywhere in nationally or internationally operating research institutions or companies and thus prepare for your further professional career.

► STUDY SCHEDULE

1 semester

Methodology of product engineering
Dimensioning and assessing of urban road traffic infrastructure
Motor vehicle powertrain
Vehicle electronics
Elective modules*

2 semester

Cost optimization and variant management
Advanced methods in mechanics
Fluid mechanics and gas dynamics
Elective modules*

*Elective modules:

Winter semester: *Sound-Engineering, fuel cell / hydrogen technology, Product lifecycle management*

Summer semester: *Lightweight construction materials in the automotive industry, Alternative powertrains, Engine process analysis and simulation, Numerical and statistical analysis, Logistics*

For additional elective modules please see latest curriculum on the website of the program.

3 semester

Thesis